

INSTRUCTION MANUAL

Model THPC

***Ti*TAN**
LIFTING TECHNOLOGIES



Note: Owner/Operator must read and understand this instruction manual before using the clamp.

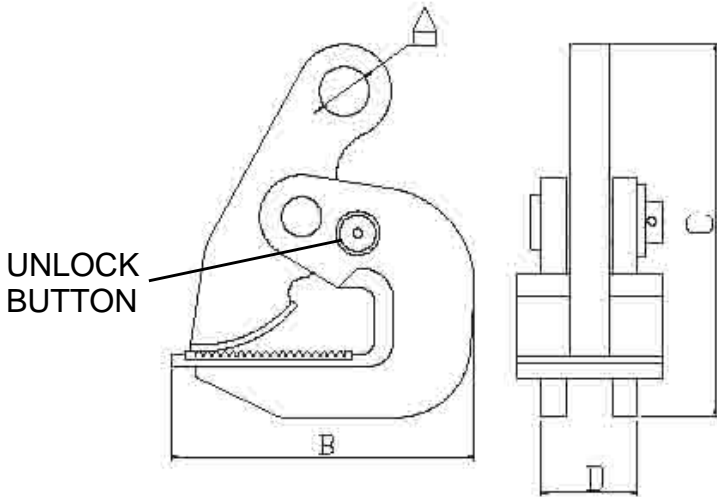
General

This manual contains important information for the correct installation, operation, and maintenance of the equipment described herein. The use of any clamp presents some risk of personal injury or property damage. All persons involved in such installation, operation and maintenance should be thoroughly familiar with the contents of this manual. To safeguard against the possibility of property damage or personal injury follow the recommendations and instructions of this manual and keep it for further reference.

These clamps are type-tested 5 times the rated load and each unit is proof-tested twice the rated load.

Do not use the clamps in areas containing flammable vapors, liquids, gasses or combustible dust or fibers. Do not use the clamp in highly corrosive, abrasive, wet environments or in applications involving exposure to temperatures below -40°C or above 80°C

Specification



Model THPC	016	020	030	040	064	080	100	160	200	
Rated capacity (each clamp) tn	0.8	1.0	1.5	2.0	3.0	4.0	5.0	8.0	10.0	
Test load KG	1600	2000	3000	4000	6000	8000	10000	16000	20000	
Jaw Opening mm	0-25	0-30	0-30	0-40	0-45	0-50	0-55	0-100	0-125	
Dimensions mm	A	22	25	30	30	30	30	30	55	55
	B	125	148	148	172	180	170	180	282	325
	C	165	205	205	245	245	260	260	400	500
	D	40	40	45	47	50	52	56	65	75
Net weight kg	2.5	3.5	4	5	6	6.5	7.5	22	33	

Installation

3.1 Estimate the weight of the plate to be lifted or moved and make sure it does not exceed the rated load of the clamp.

3.2 This clamp with pivoting shackle can be used for lifting and transporting plate at various angles, but the load capacity is reduced, as seen on the diagram below showing the load/force capacities

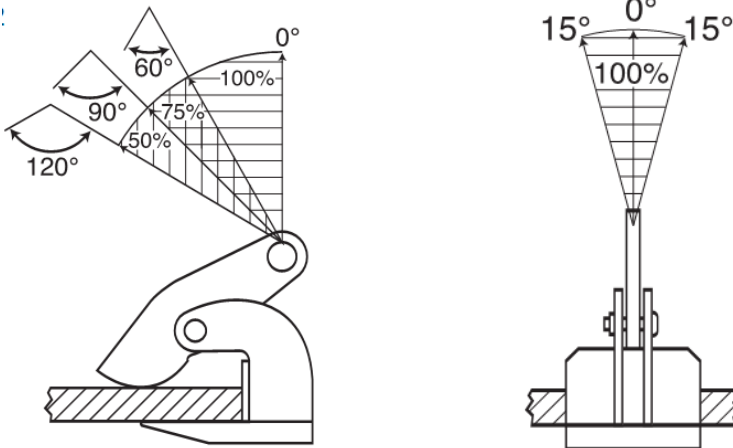


Diagram of force

3.3 When lifting clamps are used for horizontal transport of the clamps, one should observe that the lifting capacity for double leg chain slings is as follows.

- >60 degree = 100% of the WLL
- 60-90 degree = 75% of the WLL
- 90-120 degree = 50% of the WLL

3.4 Make sure that the plate surface has a hardness not exceeding HRC 30/ Brinell 300.

3.5 Make sure that the support to which the clamp is attached is strong enough to support the load.

IMPORTANT! YOU MUST USE THESE CLAMPS IN PAIRS OR MULTIPLES.

4. Operation

Warning

To avoid damage and/or personal injury:

1. Do not exceed maximum load of the clamp.
2. Do not use the clamp to lift or transport people.
3. Do not use damaged clamp or clamp that is not working properly.
4. Do not lift or transport loads over people and make sure all personnel remain clear of lifted load.
5. Do not lift the plate that is not fully engaged with the clamping jaws.
6. Do not leave load suspended by the clamp or left unattended unless specific precautions have been taken.
7. Do not lift loads that are not balanced, and the holding action is not secure.
8. Make sure of the condition of the load to be lifted.
9. Be sure to stay clear of objects being lifted.
10. To unlock Jaw when locked in the OPEN position, Press down on Jaw to relieve spring tension and PUSH the UNLOCK BUTTON on the side of the Clamp .

4.1 Place the clamps on the plate and apply pressure so that the inner side of the jaw rests against the plate.

4.2 Tension the cables or chains with the crane hook, while the inner side of the jaw rests against the plate.

4.3 The load may now be slowly lifted, paying careful attention to maintaining constant tension on the chains and/or cables.

4.4 As soon as the load is at its destination let the crane hook descend slowly until the clamp is fully free of load, meaning that the lifting chain is no longer taut.

4.5 The clamps may now be removed from the load.

5. Maintenance/Inspection

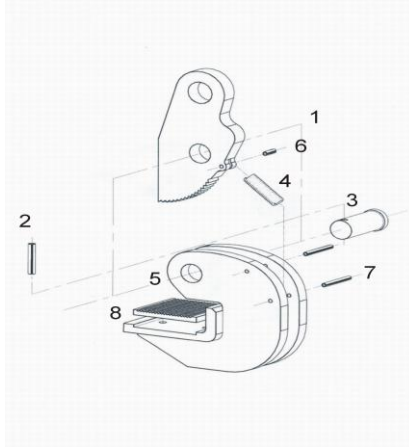
To maintain satisfactory operation, a regular inspection procedure must be initiated so that worn or damaged parts can be replaced before they become unsafe.

If faults are detected the clamp must be removed from service immediately.

The intervals of inspection must be determined by the individual application and are based up on the type of service to which the clamp is subjected.

The components of the clamp are to be inspected for damage, wear, corrosion or other irregularities.

Repairs may only be carried out by a specialist workshop that uses original spare parts.



6. Parts List

Item	Description	Quantity
1	Clamping jaw	1
2	Roll pin	1
3	Jaw pin	1
4	Lock spring	1
5	Body	1
6	Roll pin	1
7	Roll pin	1
8	Screw jaw of the body	1

