

ALFRA-MAGNETIC-SYSTEMS

LIFTING-MOVING-POSITIONING-ALIGNING-MOLDING-TRANSPORTING



TML 250



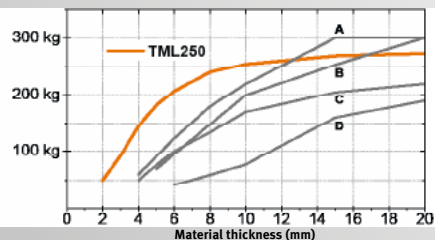
Key Facts TML 250:

- Up to 250 kg lifting force at 10 mm material thickness and 90 kg lifting force already at 3 mm material thickness (The stated performance adds a safety-factor of 3 for the lifting operation. This means, that the tear-off force needs to be three times the maximal lifting force.)
- Outstanding performance on thin walled materials
- Weight reduction of 70% at same lifting force (than competitive magnets)
- Effortless and ergonomical one-lever magnet activation
- Revolutionary magnetic technology allows for a much wider range of lifting solutions
- Pivotable and 360° rotatable load swivel
- TiN-coated, hardened steel magnetic adhesive surface

Technical Data TML 250:

- Weight: 3,5 kg
- Up to 750 kg max. lifting force
- Max load: up to 250 kg (1:3 safety factor)
- Length: 240 mm (closed lever), Width: 91 mm, Height: 191 mm (open lever)
- Magnetic contact surface: Length: 135 mm, Width: 65 mm

Prod.-No. 41250



Competitor:

- A:** 300 kg Permanent Lifting Magnet; 9 kg Weight
- B:** 300 kg Permanent Lifting Magnet; 11 kg Weight
- C:** 250 kg Permanent Lifting Magnet; 10 kg Weight
- D:** 250 kg Permanent Lifting Magnet; 10 kg Weight



TML 500



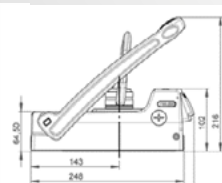
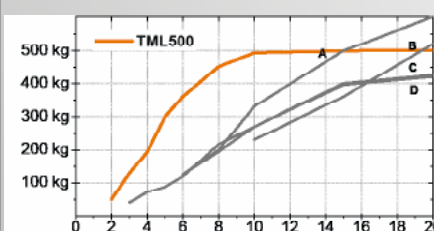
Key Facts TML 500:

- 300 kg lifting force already at 5 mm material thickness and 490 kg lifting force at 10 mm material thickness (The stated performance adds a safety-factor of 3 for the lifting operation. This means, that the tear-off force needs to be three times the maximal lifting force.)
- Outstanding performance on thin walled materials
- Weight reduction of 70% at same lifting force (than competitive magnets)
- Effortless and ergonomical one-lever magnet activation
- Revolutionary magnetic technology allows for a much wider range of lifting solutions
- Pivotable and 360° rotatable load swivel
- TiN-coated, hardened steel magnetic adhesive surface

Technical Data TML 500:

- Weight: 7,3 kg
- Up to 1.500 kg max. lifting force
- Max load: up to 500 kg (1:3 safety factor)
- Max. Vertical Lifting Capacity: 150 kg at 90 degrees (from 15 mm S235 with 1:3 safety factor)
- Length: 295 mm (closed lever), Width: 118 mm, Height: 216 mm (open lever)
- Magnetic contact surface: Length: 185 mm, Width: 88 mm

Prod.-No. 41500



Competitor:

- A:** 600 kg Permanent Lifting Magnet; 22 kg Weight
- B:** 600 kg Permanent Lifting Magnet; 24 kg Weight
- C:** 500 kg Permanent Lifting Magnet; 20 kg Weight
- D:** 500 kg Permanent Lifting Magnet; 8 kg Weight



TMC 300 - MAGNET BASE UNIT:



Key Facts TMC 300 as Magnet Base:

- Up to 300 kg lifting force, even on a steel plate of only 6 mm thickness
- Ergonomic and easy one-hand activation
- M5 and M6 tapped holes on the top as well as on the sides enable an easy attachment of handling accessories like cutting guides, angle side plates, handles and much more
- Ideal workload easement, f. e. for plate levelling, platform building, fixturing and workholding of all types
- The specially arrested magnet field (patented) allows welding with distance as close as 15 mm to the magnet-outside
- Hardened steel base with TiN coating for a long lifetime at simultaneously low airgap – avoids damages of the lower surface
- Incredible shear force holding power a. o. for a better grip in vertical applications

Technical data TMC 300:

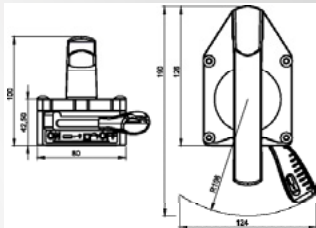
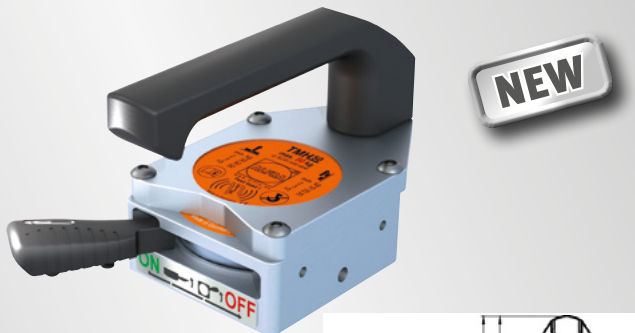
- Weight: Only 1 kg
- Tear-off force: 300 kg (at a 6 mm thick steel sheet S 235)
- Length: 82.5 mm, Width: 80 mm, Height: 32.5 mm

Prod.-No. 41100

TMC 300 OPTIONS

THE TMC 300 (PROD.-NO. 41100) IS AVAILABLE IN A VARIETY OF CONFIGURATIONS AND PERFECTLY DESIGNED FOR GETTING CUSTOMIZED BY YOU.

TMH 50 – HAND LIFTING MAGNET



Key facts TMH 50 – Hand Lifting Magnet:

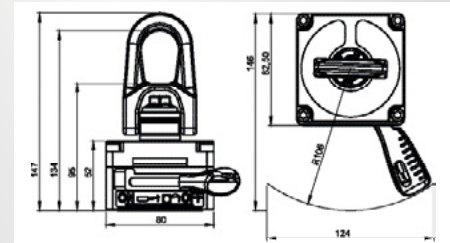
- Max. lifting capacity: 50 kg – (even from 3 mm sheet metal S235)
- Protects hands and fingers from hot and sharp steel
- Invaluable for anyone f. e. moving parts from one place to another (max. temperature: 60°)

Technical data TMH 50 – Hand Lifting Magnet:

- Weight: 1.6 kg
- Max. lifting capacity at vertical lifting: 50 kg
- Length: 126 mm, Width: 80 mm, Height: 100 mm; with handle: Length: 190 mm, Width: 124 mm

Prod.-No. 41100.H

TML 100 – LIFTING MAGNET



Key facts TML 100 – Lifting Magnet:

- Max. lifting capacity of 50 kg at 3 mm material thickness and 100 kg lifting capacity from 6 mm (at safety factor 1:3)
- Outstanding performance on thin walled materials (already applicable from 1 mm material thickness)
- Pivatable and 360° rotatable load swivel—even under full load

Technical data TML 100 – Lifting Magnet:

- Weight: 1.7 kg
- Tear-off force: 300 kg (from 6 mm sheet metal S235)
- Max. lifting capacity at vertical lifting: 30 kg at 90°
- Length: 82.5 mm, Width: 80 mm, Height: 85 mm (lifting hook folded down) 147 mm (lifting hook folded up)

Prod.-No. 41100.L

ONE SOLUTION FOR HUNDREDS OF APPLICATION POSSIBILITIES!

LIFTING-MOVING-POSITIONING-ALIGNING-MOLDING-TRANSPORTING

SET TMA 600 – VARIABLE WELDING ANGLE



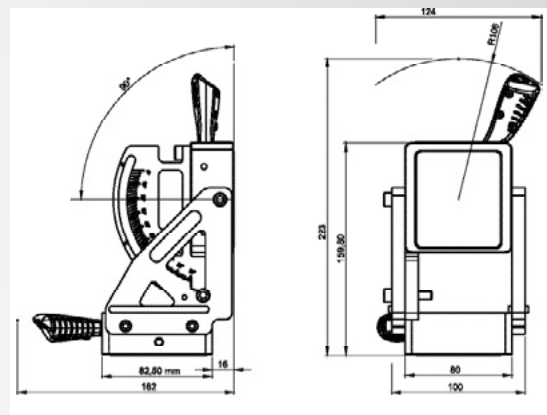
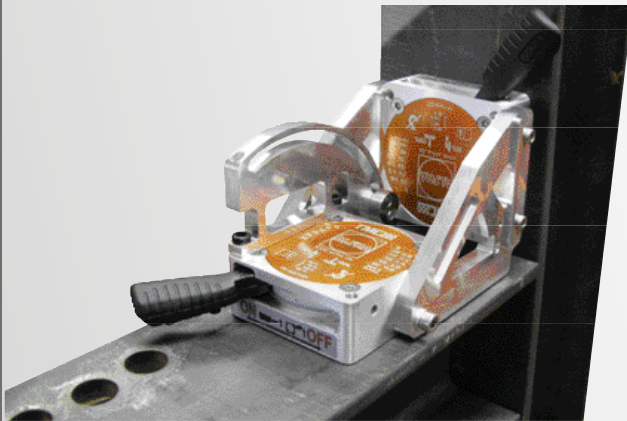
Key facts Set TMA 300 – Variable Welding Angle:

- Stepless adjustable angle side plates from 0° to 90° to hold/weld worksheets
- Quick-acting clamps for easy adjustments
- Invaluable for anyone, who has to weld heavy worksheets in different angles
- Light-weighted, easy and trouble-free handling

Technical data Set TMA 300:

- Tear-off force: 300 kg (at 6 mm steel sheets S235)
- Shearing force at 100 kg (at 6 mm steel sheets S235, 1:3 safety factor)
- Weight: 2.7 kg
- Length: 162 mm, Width: 124 mm, Height: 223 mm

Prod.-No. 41100.A



ALFRA – MAGNET CHIP REMOVER



Key facts Magnet Chip Remover:

- A magnet is moved up and down in a stainless steel round-stick. The strong magnet pulls the metal chips to the stick – pull the button and the chips will fall off.
- More cleanliness at the working desk
- ALFRA Magnet Chip Remover Length: 400 mm

Prod.-No. 18654



102, Avenue Maurice Berteaux - F-78500 Sartrouville - Tel. : +33(0)1 30 86 01 33 - Fax. : +33(0)1 61 30 86 56
ZA Salzbaach - L-9559 Wiltz - Tel. : +352 26 95 19-1 - Fax. : +352 81 05 17



www.stas.fr ■ **E-mail : stas@stas.fr**

www.lifteurop.com ■ **E-mail : info@lifteurop.com**

