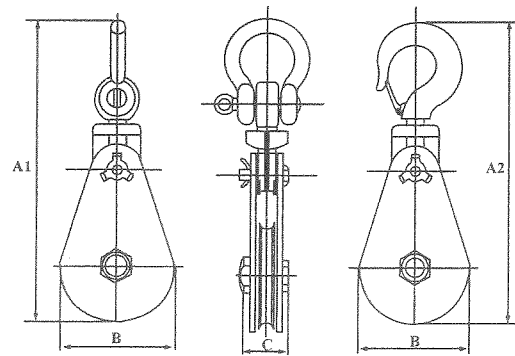


# **WIRE ROPE PULLEY BLOCKS**

TYPE	CAP t	LS type A1(mm)	LH type A2(mm)	B(mm)	C(mm)	Wire Rope Size(mm)
3"X1	2	286	292	82	70	7-9
4(1/2)"X1	4	345	358	120	70	10-12
6"X1	4	399	412	160	70	16-18
6"X1	8	475	498	160	93	20-22
8"X1	8	528	549	210	93	20-22
8"X1	15	663	672	210	102	22-24
10"X1	10	679	695	260	115	24-26
10"X1	12	679	701	260	115	24-26
12"X1	12	767	797	310	133	24-26
12"X1	15	788	800	310	133	26-28
14"X1	22	952	960	365	140	28-32
16"X1	22	1019	1027	415	140	28-32
16"X1	30	1126	1085	415	155	32-35
20"X1	30	1256	1177	514	162	32-35
24"X1	50	1525	1445	625	240	46-50



## **INSTRUCTIONS FOR THE SAFE USE OF WIRE ROPE PULLEY BLOCKS**

**Using wire rope pulley blocks safely**

**Ensure that the loads do not exceed the working load limit of the block**

**Only use the correct size wire rope that suits the pulley**

**Ensure that the block is attached to a suitable point before lifting**

**In-service inspection and maintenance**

**Ensure the block is kept clean and lubricated**

**Regularly inspect the block for wear, damage, distortion, cracks and any defects likely to cause a danger**

**If any of the above are found remove the block from service and refer to a competent person**